

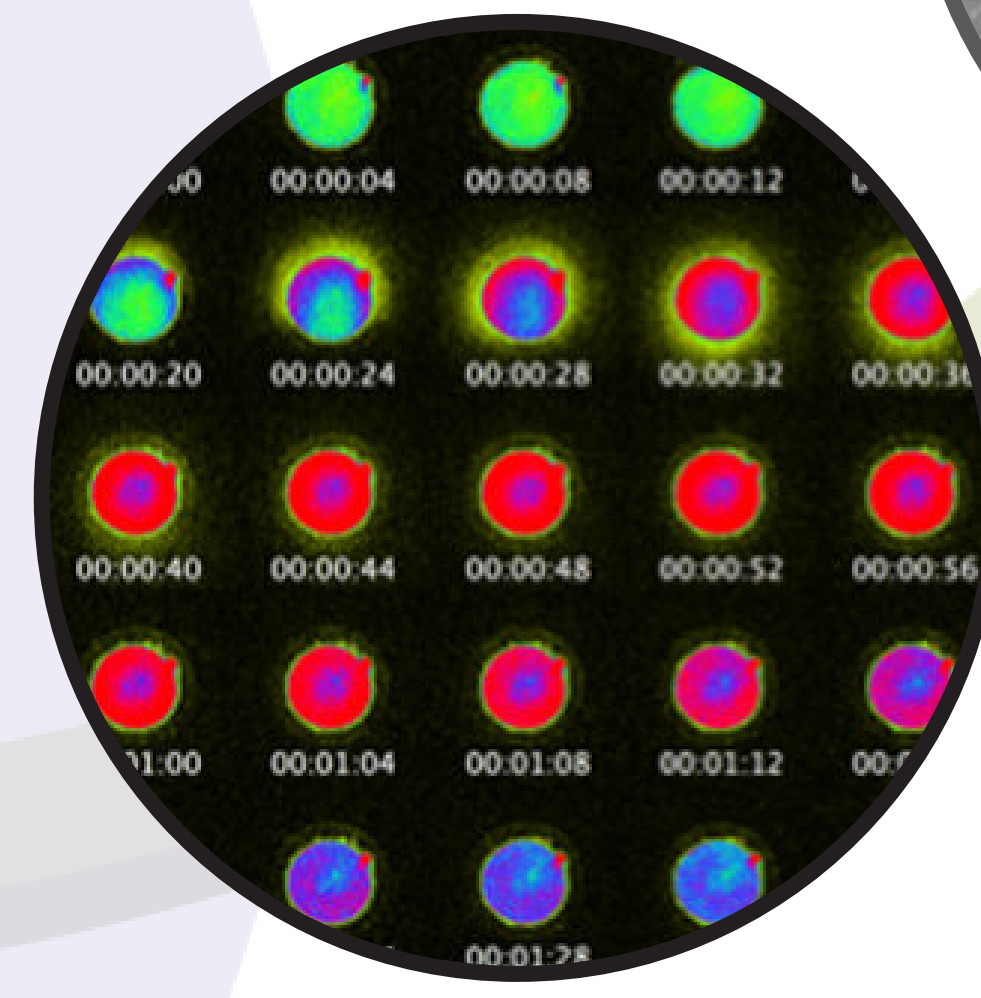
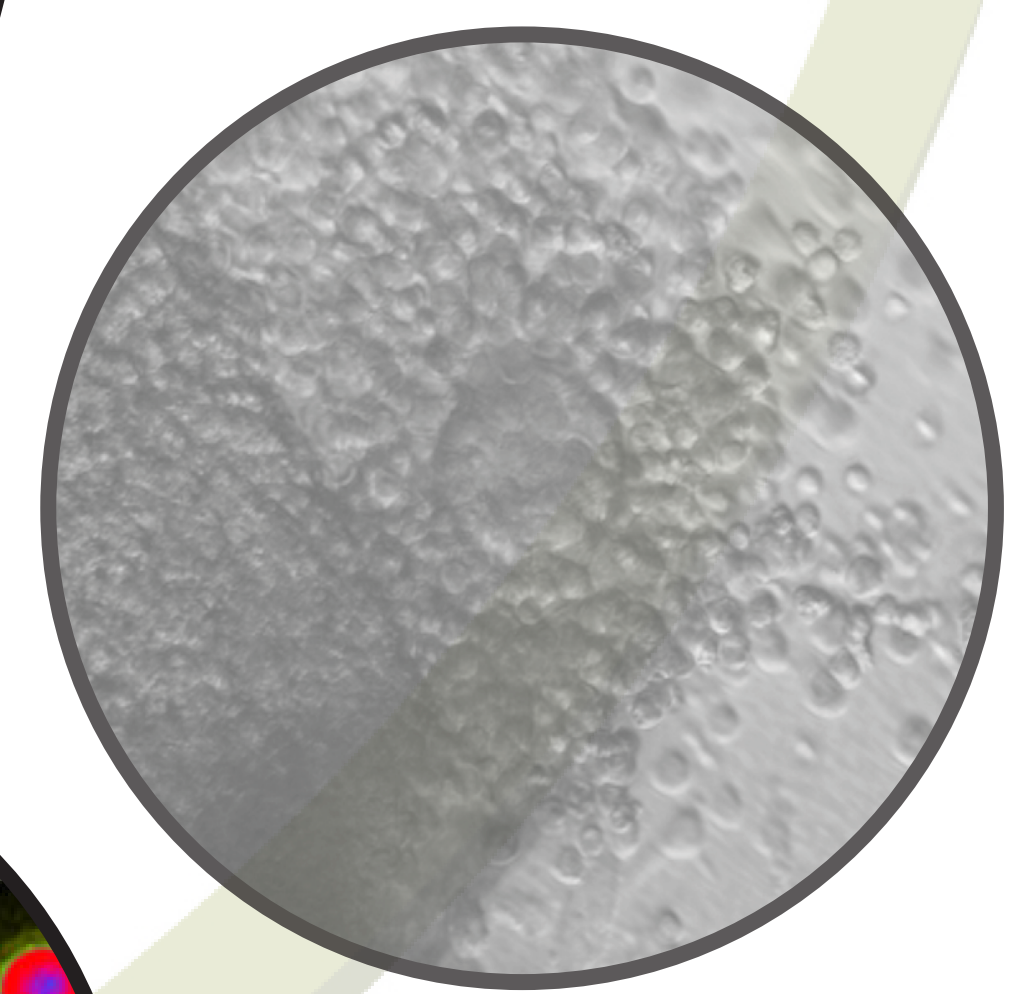
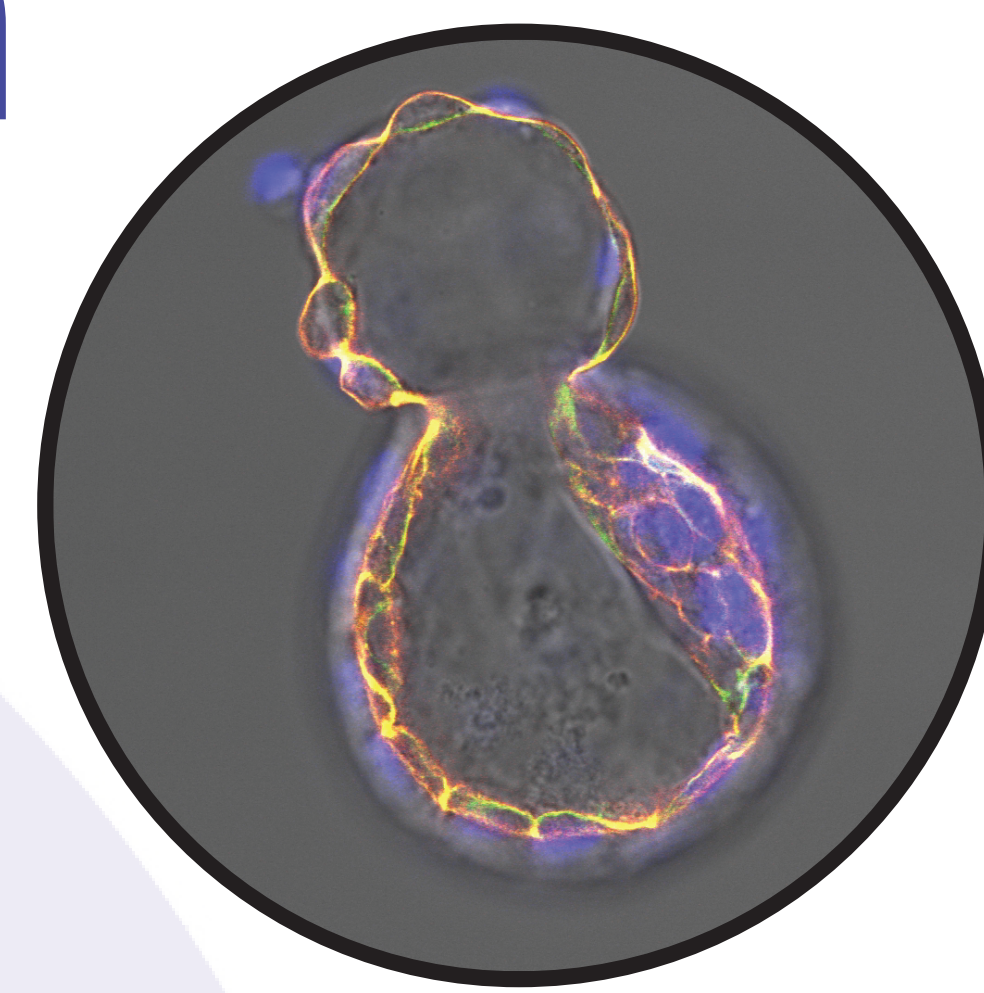
WOODRUFF LAB

Translating biological discoveries
into clinical opportunities

Our research focuses on discovering reproductive options for cancer survivors, and translating biological reproductive discoveries into clinical opportunities. We aim to advance sex and gender based research and ensure that resources on women's health are disseminated to the greater community.

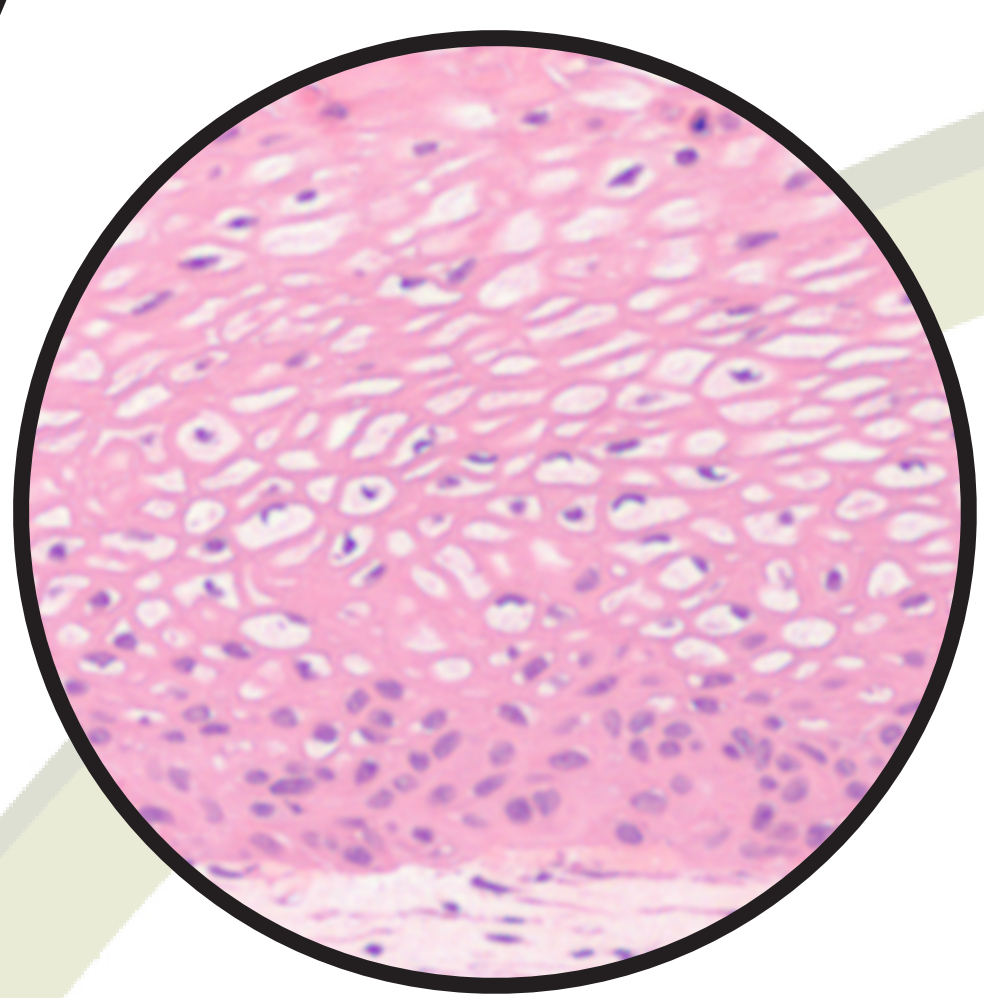
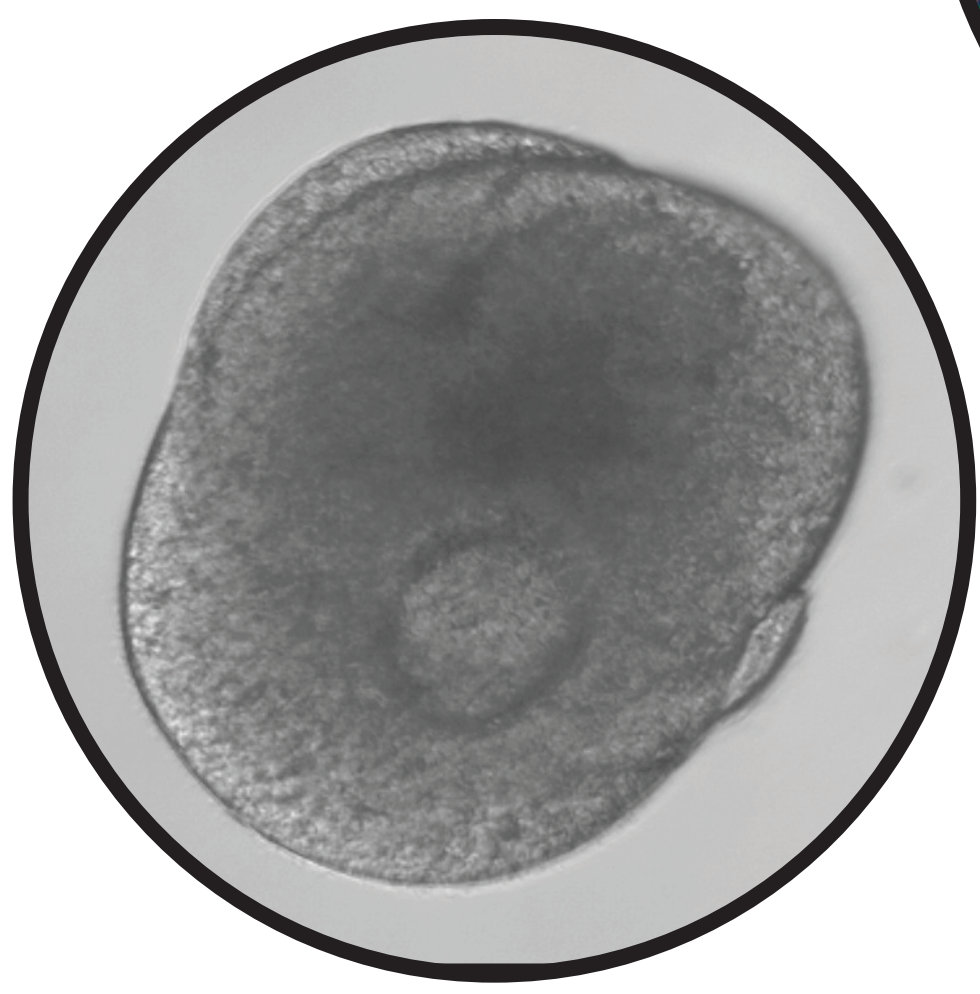
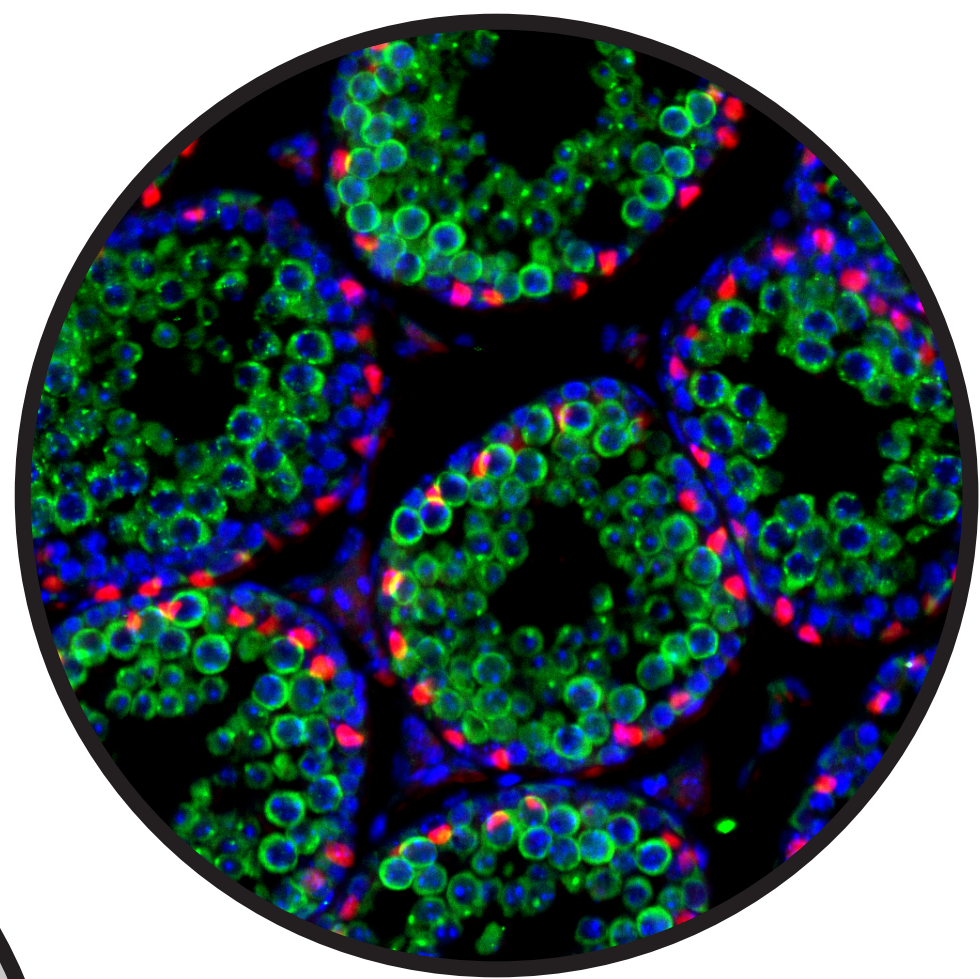
Fertility Preservation

Exploring and expanding the fertility preservation options and reproductive future of patients struggling with infertility and cancer survivors through interdisciplinary research, education and clinical care across the nation.



Physiologic Models

Combining molecular biology, tissue engineering, and material science techniques to create 3D models of human tissues that mimic the normal physiology of human organs.



Innovative Biotechnology

Using microfluidics, 3D printing, and bioengineering to discover new solutions to reproductive diseases and cancer, and shape the future of personalized medicine.

